

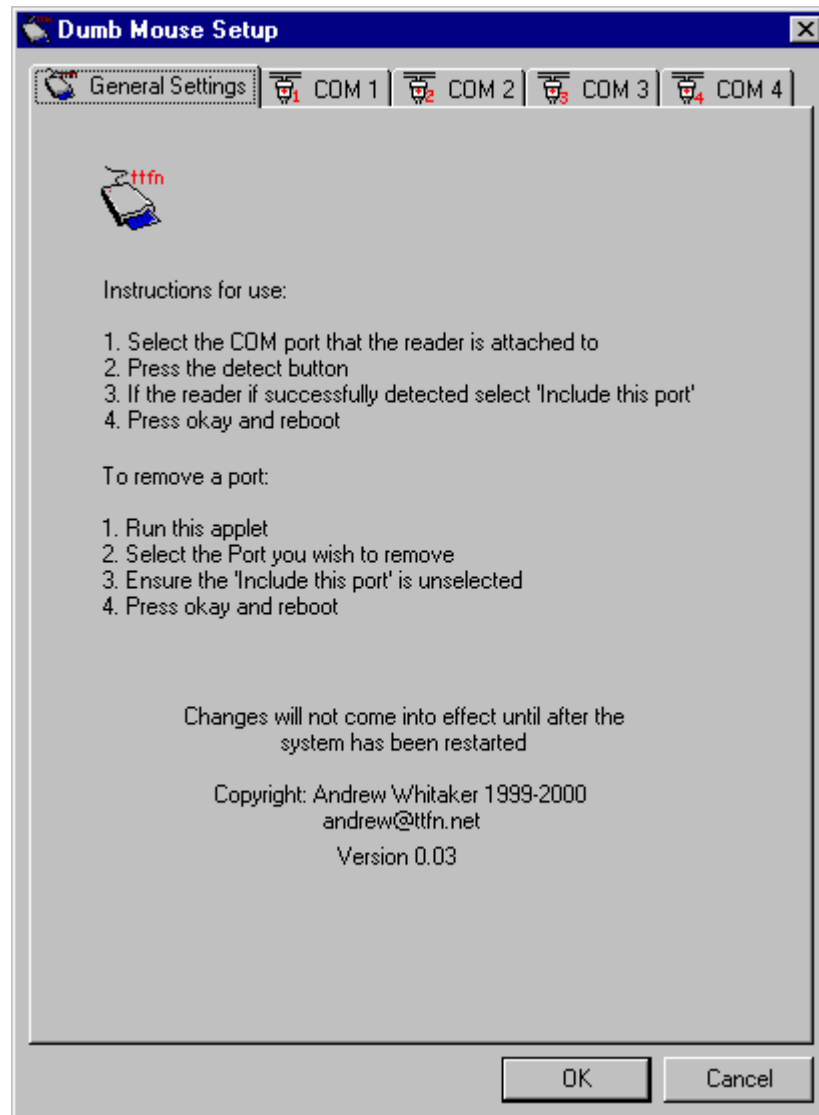
**TTFN DumbMouse Generic PC/SC Driver
Windows 95 OSR2.1/98/98SE/NT/2000**

© Andrew Whitaker 1999/2000
Version 0.03
Commercial use and distribution prohibited
pcsc@tfn.net

Installing

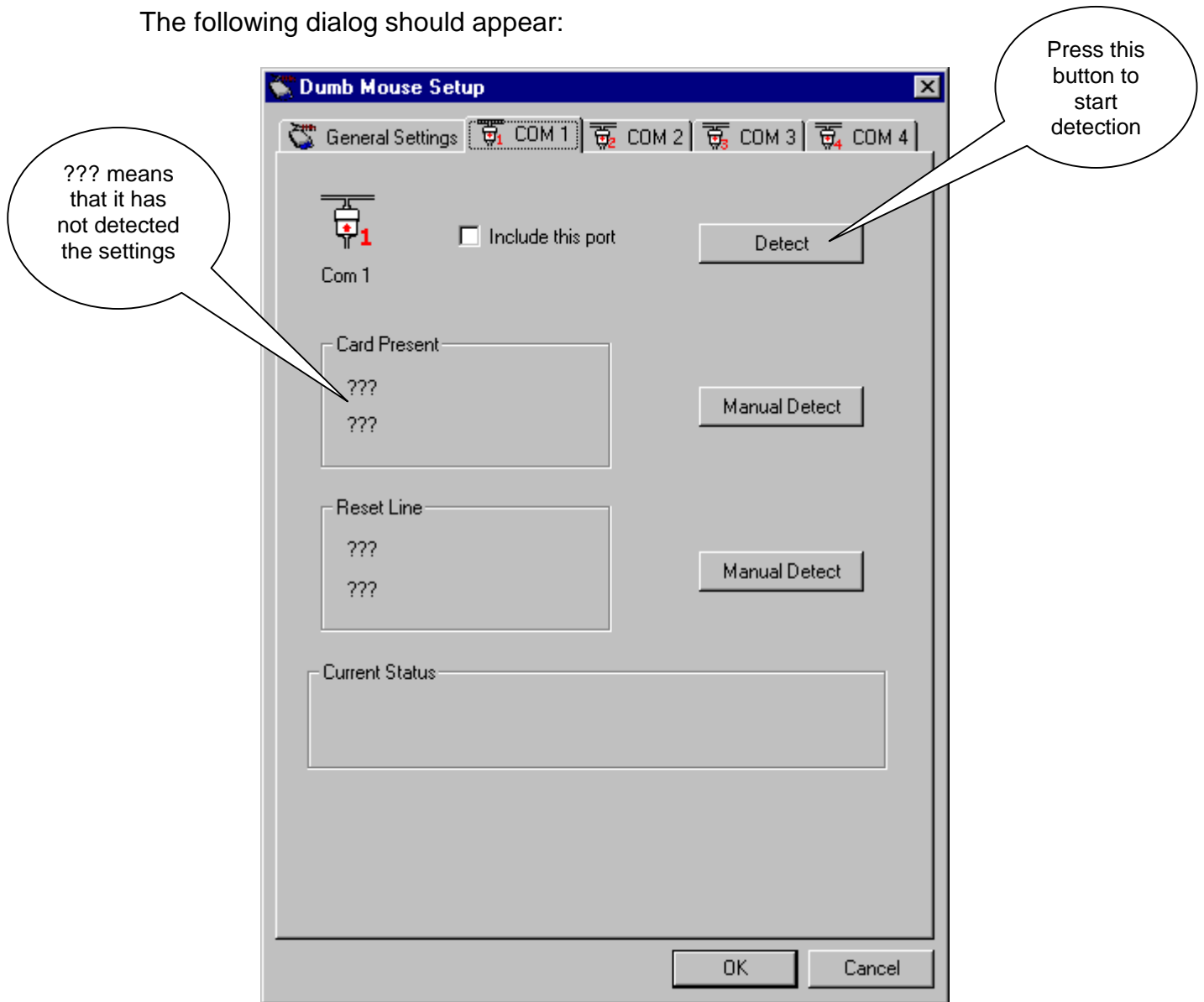
To install the driver run the install.exe program.

When the following dialog box comes up you are ready to initialise the TTFN Dumb Mouse driver for your specific hardware.



Select the COM port that your reader is attached to. In the following example the reader is attached to COM 1.

The following dialog should appear:



Attach your reader to this COM port if it is not already and then when ready press the detect button.

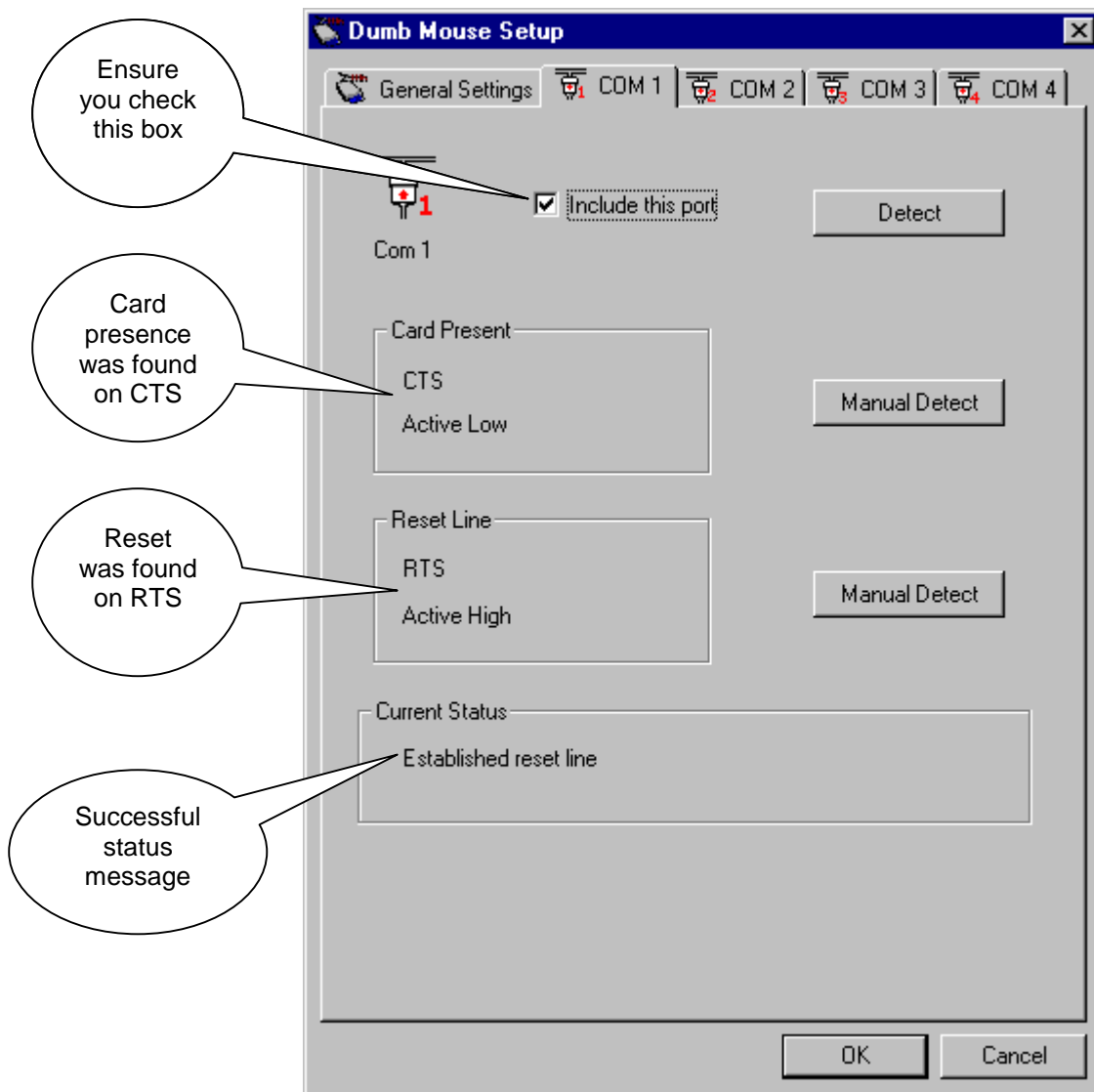
When prompted as follows remove any cards from the reader:



Click OK and then when prompted insert a VALID¹ smart card into the reader:



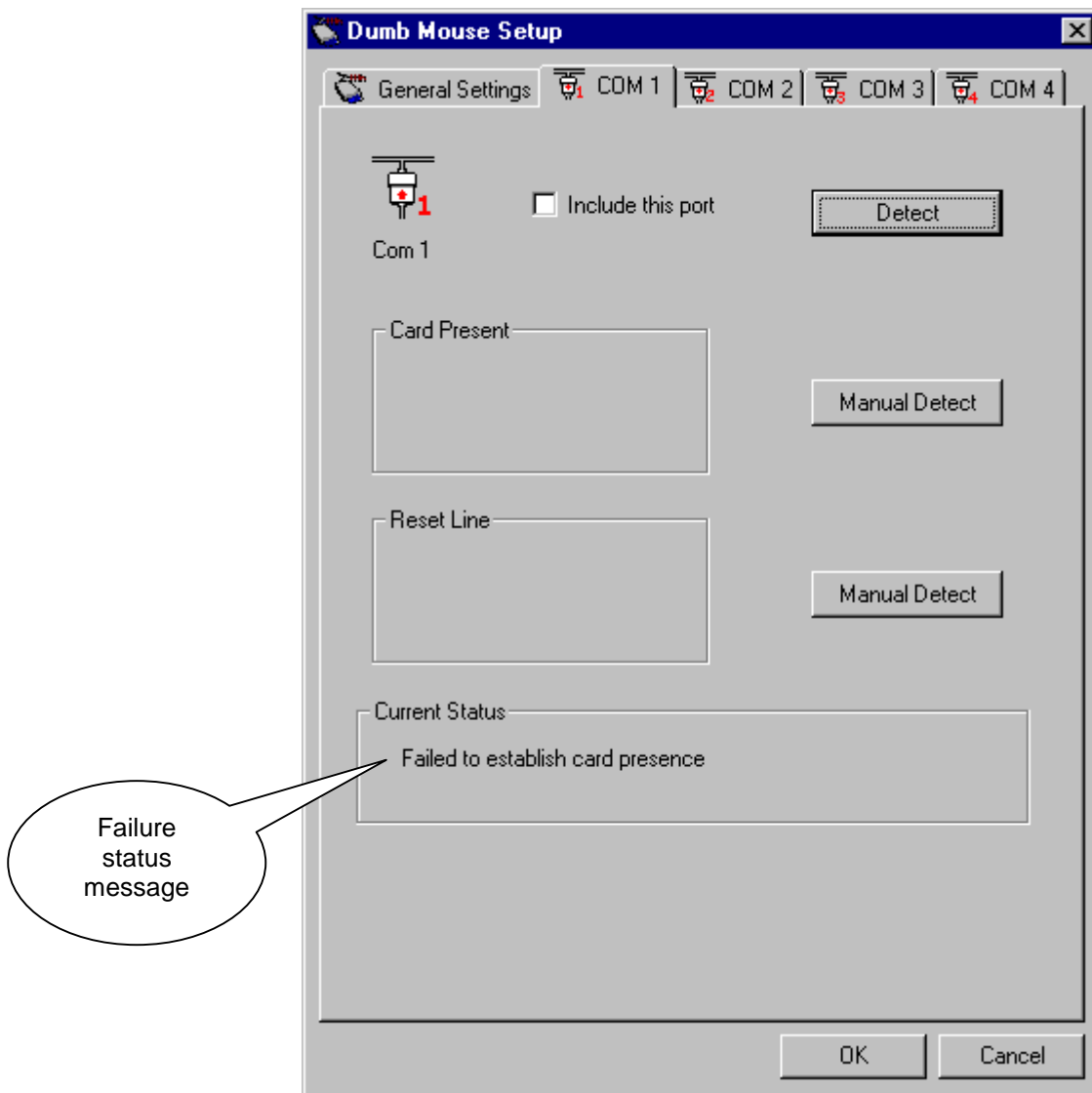
The applet will then try to detect the card presence and reset line for you, if it has been successful you should see the following:



At this point you should tick the “Include this port” check box.

¹ VALID means an ISO7816 asynchronous processor smart card

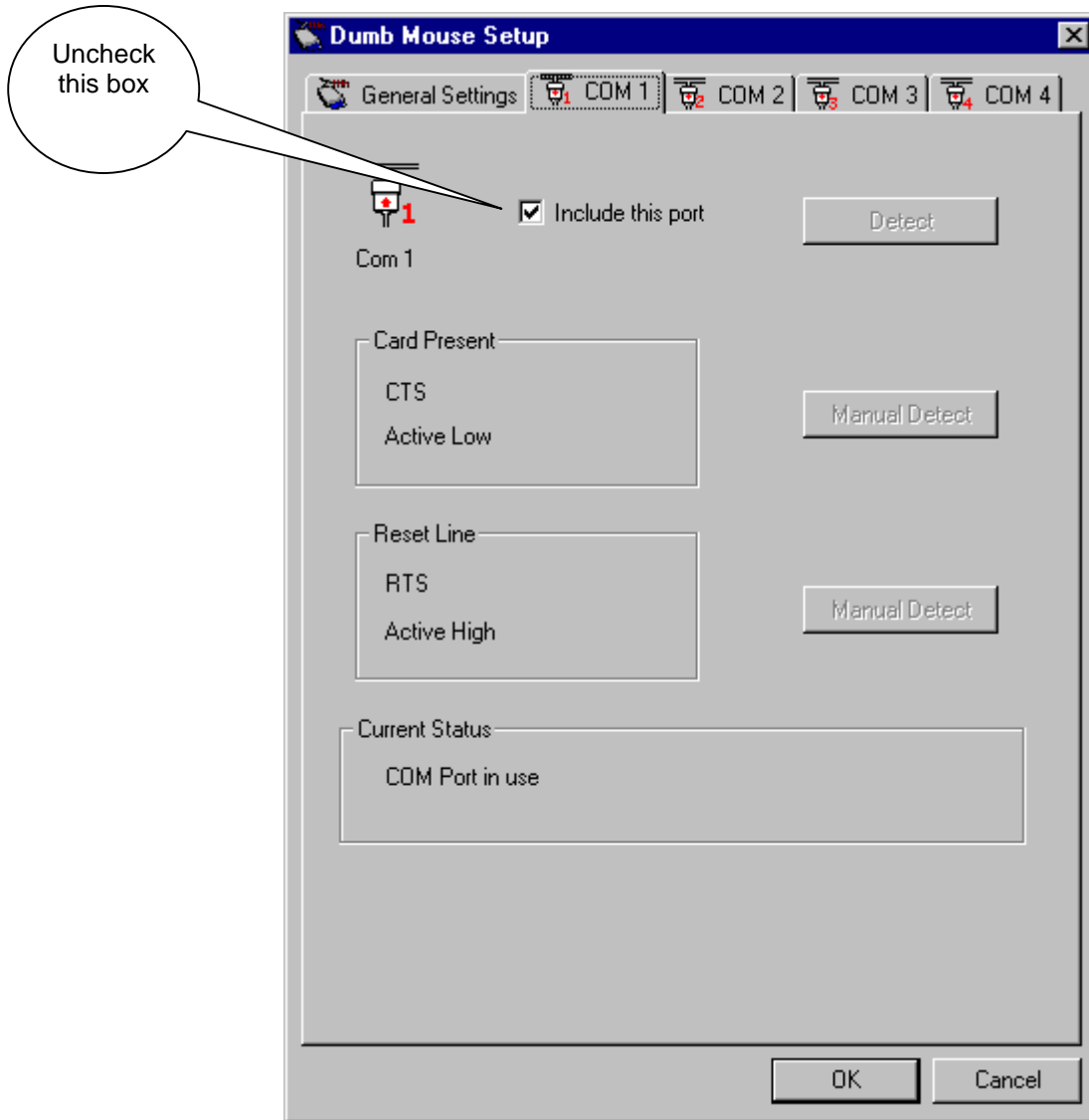
If the procedure fails you will see the following:



It may fail because it either cannot find a card presence line or it is unable to read a valid ATR.

Removing a reader

Bring up the control panel applet and select the COM port that the reader is attached that you wish to remove:



Uncheck the “Include this port” box and press OK. At this point you will either need to stop the appropriate services (Windows NT/2000) or reboot the computer (Windows 95/98).

Removing the driver

To remove the driver open the control panel and click on the add/remove programs icon:



Find the TTFN DumbMouse and click Add/Remove.

